

> FACADE SYSTEM

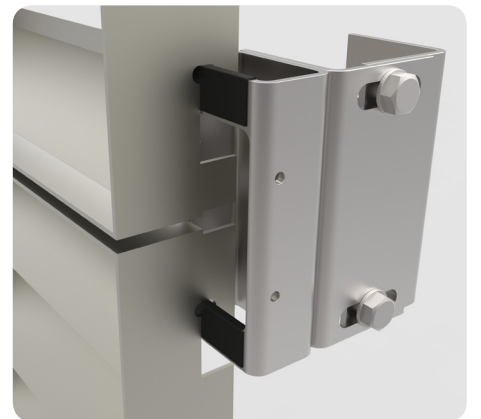
With Staco's patented facade cladding system you will create a sleek facade that will certainly attract attention. You have enormous freedom of choice in characteristic features such as the type and mesh of the gratings, dimensions, choice of materials and colour. Because of this, every project will acquire a radically distinctive appearance.

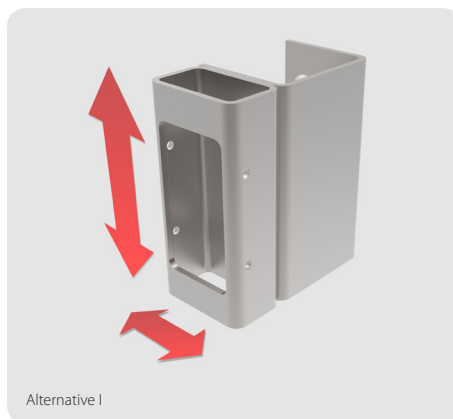
Staco's facade cladding system consists of high-quality gratings with an ingenious design at the edges. Combined with the unique mounting sets, this will ensure rapid installation with plenty of possibilities to align the gratings.

The mounting sets can be adjusted in any of three directions; in vertical, horizontal and depth. Together with louvre gratings that have been hot-dip galvanized and powder-coated using the Duplex system, a high-quality facade cladding system will be created. Because of this, the patented Staco facade cladding system is a solution for any design in any requirement, both in new building and renovation.

Advantages

- Quick and cost effective installation
- Wide range of adjustment options
- Durable steel product
- Many mesh options for the facade elements
- Complete system; one point of contact
- Strength and rigidity provided by the grating
- Excellent price-quality ratio





Standard product properties

- Stainless steel mounting sets in large and small versions (excluding facade fasteners)
- Adjustment options in three directions
- Various pre-assembled mounting sets
- Distance from facade to the front bracket min. - max.: 78 - 103 mm
- Louvre gratings type RL-L or RL-Z, thickness 2 mm
- Facade elements in S235 steel
- Heavy-duty vertical edges with patented recess
- Facade elements treated with Duplex system, compliant with EN-ISO 1461, NEN 5254 and EN 15773
- Powder coated in RAL colours
- Tolerances according to RAL-GZ 638

Optional

- Simplified mounting set: bracket and single cleat; horizontally and vertically adjustable (alternative I) or bracket; only not adjustable (alternative II)
- Only hot-dip galvanized, compliant with EN-ISO 1461
- All our grating range, for example type RR, RO(M) or expanded metal

More information?

Would you like to know more about the patented facade system? Then please contact one of our sales specialists. They will be more than happy to inform you about the wide range of options that this system has to offer in defining the image of your architectural project.

Go to www.staco.eu to find a specialist near you!

This product sheet has been compiled with great care; however, no rights can be derived from its contents.

member of  www.rotogroep.nl

> CREATE AND INSPIRE

STACO 

www.staco.eu